



# FLOATING SEAL

Huangshi Rvton Machinery Co.,Ltd

Your Reliable Seals Partner



Whatsapp



Wechat



Website



## Huangshi Rvton Machinery Co., Ltd.

**Factory Add:** Luoqiao Industrial Zone, Lingxiang Town, Huangshi, Hubei, China.

**Office Add:** 1004, Block 5, Yijing Square, No.3 Tianjin Road, Huangshi, Hubei, China.

**Tel:** 0086 15717237241 / 0086 15717233790

**Website:** [www.sealgroupsupplier.com](http://www.sealgroupsupplier.com)

**Email:** [zhm@rvton.com](mailto:zhm@rvton.com)





## About Us

Huangshi Rvton Machinery Co., Ltd. is specialized in researching, manufacturing and selling Floating Seals since 2004.

Adopting the operating concept of "customer first, quality ahead", RVTON seals have been sold nationally as well as worldwide with the prompt service and competitive price.

We have established our own brand "RVTON". RVTON means that the prosperity is full of universe and all over the world.

You are warmly welcome to join us and cooperate with us.



黄石市瑞通机械有限公司是一家集科研、开发、生产、及销售浮动油封环于一体的专业性企业。也是当地的明星企业, 拥有自己的独立品牌RVTON。

多年来, 我们不断地引进先进技术以及更新生产设备, 重视技术人才, 并通过ISO9001国际质量管理体系的认证, 实现生产的专业化, 现代化和规模化。

本着客户至上, 质量第一的理念, 瑞通产品畅销全国各地, 得到广大客户的一致好评。

黄石市瑞通机械有限公司将以周到的服务和友好务实的沟通, 与您建立长期合作, 共同发展!

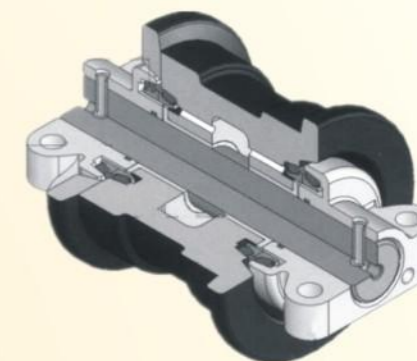


## Installation guide

### 安装方法

#### Using specialized tools installation:

The pressure will apply to the O-ring directly. As shown, the special tool is mounted between the metal floating ring and the rubber ring, toward the seat hole, the rubber ring is evenly pressed into the hole. (Figure 1)



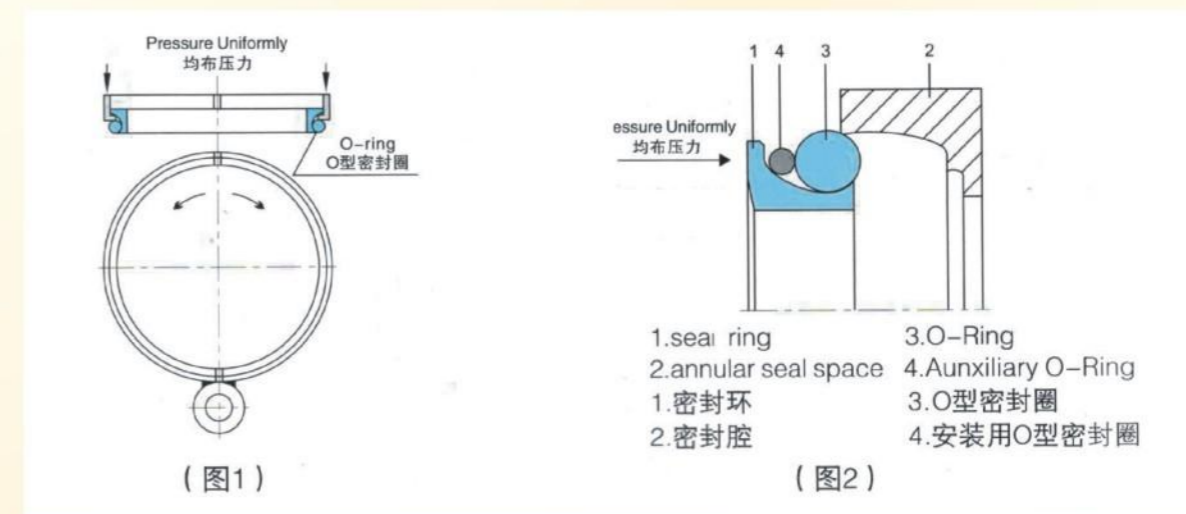
Mounting position  
安装位置

#### Other installation methods:

One auxiliary O-ring is fixed between the conical ring surface of the floating oil seal and sealing O-ring (as shown). The ring of the floating oil seal is applied uniformly by pressure and auxiliary O-ring braces the sealing O-ring to ensure the other correct mounting positions. (Figure 2)

**使用专业工具安装:** 使用特制工具安装浮动油封环, 将压力直接作用在O型圈上。如图所示将专用工具安装在金属浮环和橡胶圈之间, 对正座孔, 将橡胶圈均匀地压入孔中。(图1)

**其他安装方法:** 使用一个辅助的安装用O型圈, 定位于浮动油封环锥面和密封用O型圈之间(如图)。对浮动油封环施加均匀压力, 辅助O型圈支撑住密封O型圈, 从而保证其他安装位置。(图2)





## Partial OEM Reference 部分零件号

BRAND	OEM No.	MODEL
Komatsu	20Y-30-00070、20Y-30-00100	PC150V、PC200、PC220
Komatsu	17M-27-00102、287-33-00010、100-27-00030	PC400、PC450、D85、D155
Komatsu	TZES209A00、20Y-30-00041	PC150、PC200、PC220
Komatsu	21K-30-B1180、207-30-00101	PC150 SERIE 3、PC150 SERIE 3
Komatsu	198-30-00072、170-27-00020	D80、D85、D155、D185
Komatsu	150-30-00035、170-30-00111	D80、D85、D41A、D155
Komatsu	130-30-B0400、175-30-00700、175-30-00701	D41、D41A、D41E
Komatsu	17M-27-00102、141-30-00611	PC450、D60、D61、D61、D65EX
Komatsu	130-27-12450、170-27-00010、150-27-00016	D50、D30、D65
Komatsu	205-30-00052、150-27-00015、130-27-00010	PC650-3、PC650-1
Komatsu	14X-27-00100、22B-30-00030、21K-30-B0200	D41A、D41E、PC200、PC160
Komatsu	110-30-00085、140-30-00040、140-30-00141	D10-A-S-1、D10Q-S-2
Komatsu	205-30-00052、14X-27-00100、566-33-00010	D65E-12、D65EX-12、D65P、PX
Hitachi	4114753	EX200-1、EX200、220 EX200LC、220LC
Hitachi	4110358/4514259	EX200-2、5、EX300、EX300LC
Hitachi	4317586/4060222	UH 07-5 (UH081)
Hitachi	4056360/4110359	UH 07-3
Volvo	111-43309、14579901	FM40F、EC290
Volvo	118100120、SA825200180	EC240 / EC210
Volvo	SA80380010、SA80380030	EC240 / EC210 / EC200
Volvo	1090880	EC420
Liebherr	942	710924012
Liebherr	954	710924512
Fiat	71400956、71483189	FH220-240.3-270、FH200-220-240.3



BRAND	OEM No.	MODEL
Fiat	79001861、71314509	JB150、FH220-FH240.3
Fiat	71401989、593754、71418383	FH200 / EC210 VOLVOA、AD18-AD20
Fiat	71401349、76029105、71401322	FX215LC、FD-170、FX215
Fiat	71401362、71402486	FX-215、FH220.3-FH240.3
Fiat	73171721、71401161	FX-215、FH130-FH150.3、FH130
Hyundai	XKAH01012	360-7
Hyundai	39Q6-42130	R220LC-9S
Hyundai	81N4-13140	R140LC-7
Case	160397A1	9020 / 9030B
Case	152736A1	988 ( ESCAV ) / 9030 / 888
Case	M8046027、100819	CKE888、CORTE BASE
Case	D-35.267、152729A1、G8046027	850、1150、9020、988
Caterpillar	9W7225	E320
Caterpillar	9W7207/9W7213	D4G、D3G931、D3
Caterpillar	9W7331、8P1857、9W3732	D5B、D8H、D8K
Caterpillar	1M8747、9W7223	D6C / D / E / G / SR
Caterpillar	9W6648	977H、977K
Caterpillar	1P7249	215B-SA、225B、LC
Caterpillar	2M2858、1M8746	205、D8N、D9/G
Caterpillar	5K5288、6P3595	215B、215B-LC、215D
Caterpillar	9G5315、9W6671、9W6680	225SA、227
Caterpillar	9G5311、9W6666	245
Caterpillar	9W6647、7M0481	218、219D、245B、LC
Caterpillar	8E5609、1M8748	E200B、EL200B
Caterpillar	9W7220、5P0204	E320B、CAT320

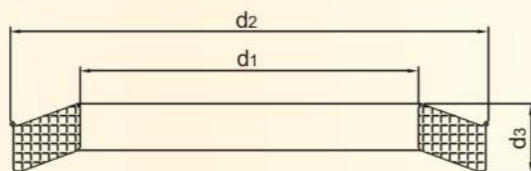
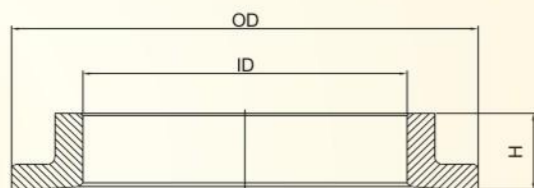
Please contact us if you need more information



## Partial Size Chart 部分尺寸表



**DF TYPE**



Metal ring (mm)				Rubber ring (mm)
CODE	OD	ID	H	d1*d2*d3
R0410L	59	41	10	46×63×11.3
R0450L	59	46.5	9.3	51×65.25×9
R0480L	62.1	47.1	10	50.3×68.3×12
R0505L	65	50.6	10	54×73.4×10.7
R0540L	73	54	10.2	77.5×59×13
R0550L	67	54	8.7	75×58.8×7
R0580L	80	59	10	63.4×82.4×10.5
R0670L	87	67	11.6	72.2×92.4×14.33
R0670L-A	86	66.5	10.5	72.4×92.6×12
R0730L	93	73.6	10	80×101×10.5
R0875L	111.5	87	9.2	94×114×12.5

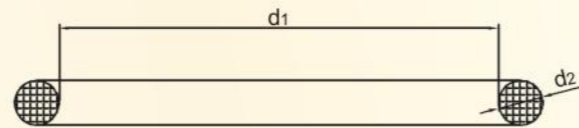
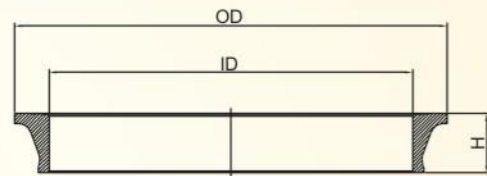


CODE	Metal ring (mm)			Rubber ring (mm)
	OD	ID	H	d1*d2*d3
R0875L-A	111.5	87	9.2	94×113.4×12
R0940L	112	94	12	98×123×14
R0990L	120	99	8.5	103×121×11
R1040L	126.2	103.7	12	110.5×133×13
R1050L	123.5	105	13.5	108.5×137.1×16.5
R1140L	137.8	114	13	122×144×14
R1240L	144	124	16	131×161×19
R1330L	155.5	133	14.5	140×169×16.5
R1490L	168	148.6	15.3	153×181×16
R1500L	175	150.5	15	156.7×186×16.5
R1570L	179.3	157	9.1	186.5×165×12
R1690L	195	169	16.5	203.5×178.5×15.3
R1800L	206.9	179.4	14.4	185×214.4×16.5
R1920L-A	218	193	15.8	197.5×227.2×14.5
R2000L	229	200	18	209.5×241.5×18
R2280L	260	228	21	276×236×20
R2350L	263	235.5	17.5	245×277×17
R2410L	273	241	18.2	270×250×16.5
R2750L	303	275	17.7	284×305.7×17.5
R2830L	319	283	17.3	289.2×324.2×16.5
R3200L	352.5	320	20.3	330.25×361.25×19.15
R3550L	391.7	355	20	367×399.7×20
R4390L	482	439	20	445×478×17
R4420L	470	442	20.2	485×451×17

Please contact us if you need more information



DO TYPE



Metal ring (mm)				Rubber ring (mm)	
CODE	OD	ID	H	d1	d2
R0380	51	38	10.3	41	6
R0450	58	45	10.4	48.4	6
R0510	65	51	13.5	55.5	6
R0555	70	55.5	11	58	8
R0580	75	58	14.5	61	8
R0600	74	60	10.7	60.8	7.6
R0620B	73.5	62	8.5	65	4.8
R0635	82.5	63.5	16	66.2	9.6
R0720B	80	71.5	6.5	74	4
R0730A	88.5	73	13.2	76	9.5
R0730B	91.5	72	17.75	76	9.5
R0770B	87	77	7	80	4.5
R0780A	90	78	8.8	82	5.4



CODE	Metal ring (mm)			Rubber ring (mm)	
	OD	ID	H	d1	d2
R0810	100	80	14.6	86	9.2
R0820	102	82	18.3	84.97	9.47
R0880B	97	88.5	6.5	87	4
R0900A	1055	90	13	92.5	6.3
R0900C	109.5	90	18	92.3	9.47
R0960B	106.4	96	7.5	98	4.6
R1000	119	100	16	102	9.3
R1020	118	102	13.5	106	10
R1020C	122	102	16.5	106	10
R1039	117	103.9	10.7	105	7
R1070	125	107	12.3	110	8.5
R1120	131	112	16	115	9.5
R1145	129	114.5	10.6	116	7
R1190	132	119	7	122	4.3
R1200	142.3	120	18	126	11.2
R1300A	152	130	19	134	11.2
R1430D	160	143.5	13.2	145	8.3
R1460	172	146	19	147.3	12.7
R1460A	168	146	19.3	147.3	12.7
R1460B	156	146	7	148	4.5
R1500	172	150	20	157	10.8
R1500D	170	150	16	155	9.3
R1540T	169	154	11	158	7
R1600	180	159	16	166	9
R1650A	181	165	13.5	170	7



Metal ring (mm)				Rubber ring (mm)	
CODE	OD	ID	H	d1	d2
R1710	192	171	13.5	176	8
R1780	200	178	19	183	13
R1820	210	182	19	184	12.7
R1830	202	183	14	186	8.5
R1880	205	188	14.1	192	8
R1900	216	190	23	198	12
R1950	216.5	195	15.9	198	9.3
R2000B	228	200	19	208	12.9
R2190	240	219	18	228	11.4
R2200	246	220	18	229	10
R2300	260	230	18	242	11
R2400	274	240	20	246	12.3
R2500B	270	250	15	250	9.5
R2650	293	265	19	265	12.7
R2800	310.5	280	19	278	12.2
R2950	328	295	20	298	12.2
R3000	328	298	21	298	12.2
R3180	346.5	318	19.1	318	12.7
R3180A	341	318	19	315	12.7
R3190	340.5	319.5	19.2	321	12.7
R3190B	346.4	318.5	23	315	12.7
R3200	348	320	20.2	320	12.7
R3350A	368	335	20.5	347	12
R3400B	370	340	19	345	12
R3510	375	350.5	19	355	12.7

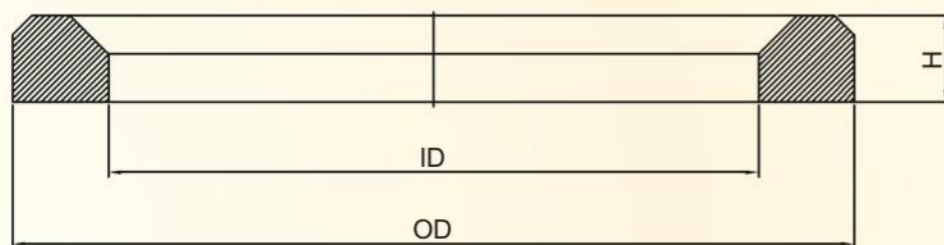


Metal ring (mm)				Rubber ring (mm)	
CODE	OD	ID	H	d1	d2
R3550	381	354.5	19	357	13
R3550B	375	355	19	355	12.7
R3660	394	366	19	359.5	12.7
R3670	392	367	18.5	360	12.5
R3700	397.3	370	19	370	12.7
R3850	413	385	23	390	15
R3870	415	387	19	385	12.5
R3990	427.2	399	19.5	395	12.7
R4290	457.2	429	19	420	12.7
R4485	482	448	20.5	458	12.5
R4650	495	465	22.1	460	12.7
R4700	500	470	25.2	474	16
R5050	532.5	505	22	493	12.7
R5080	548	508	31.2	510	18
R5300	560	530	25	530	16
R5380	580	538	31.2	538	17.7
R5400	567.6	539	19.5	532.6	12.7
R5590	590	559	25.2	560	16
R5800	608	580	22.1	582	12.7
R6667	700	667	22	660	12.7
R7750	821	775.1	30	782	18.6
R8250	865	824.5	22.8	819	12.7
R8340	886	834	40	840	20.5
R10440	1105	1044	40.6	1050	20.5

Please contact us if you need more information



PIECES DISTANCE

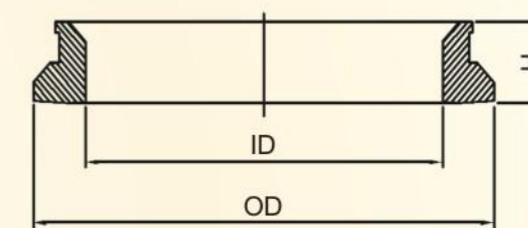
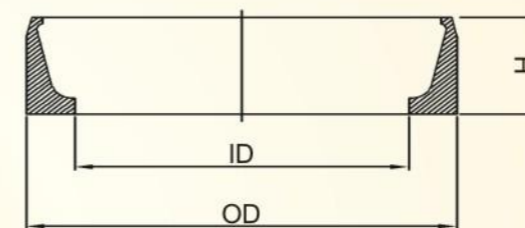


P TYPE	OD	ID	H	Another side
R1803P	180.3	160.5	11	R1500
R1800P	180	164	9.7	R1540C
R1840P	184.3	166	10.3	R1540C
R2100P	210	186	11.4	R1780A
R2300P	230	201	13	R1920
R2450P	245	216.5	10	R2090
R2550P	255	222	8.5	R2250
R2600P	260	216	13	R2090
R2720P	272.5	248	13	R2390
R2840P	284	247	13	R2500
R2860P	286	248	13	R2500
R2900P	290	248	13	R2500

Please contact us if you need more information



XY TYPE



CODE	OD	ID	H
R0545XY	70.5	53.7	21.5/10
R0665XY	82.2	66.5	20.5/10.5
R0730XY	92	73.15	10/16.3
R0760XY	93	76	22/10.5
R0820XY	99	82	22/10.5
R0960XY	113.2	95.7	21.8/10.3
R1080XY	125	108	21.5/10.5
R1920XY	220/209	199/192	15.5/15
R2370X	265	237	19
R2420XY	263	242	19.5/20
R2500XY	270	250	15/10
R3270XY	354	327	19/14.5

Please contact us if you need more information



### G TYPE



RVTON G TYPE	Alloy Iron/Bearing Steel (mm)		
	OD	ID	H
R0665G	84.5	66.5	13.3
R0920G	114.2	92	13.3
R1045G	122.3	104.5	13.5
R1500G	175.3	150	14.3
R1975G	223	197.5	16.5
R1570LG	179	157	9



Please contact us if you need more information

